

# aspect<sup>+</sup>

*Medical image, video and data management system  
Designed with clinicians in mind*



Aspect is a new generation of image capture system. It has been developed to meet the needs of busy clinicians in any specialty requiring the management of video/still images and clinical data.

Bringing together the latest technology with thoughtfully designed software, Aspect is a powerful tool in the clinical environment.

## Outstanding image quality

Aspect offers crisp, high resolution images, enabling you to see the all-important details.

Easy connectivity with the latest healthcare equipment used in microscopy, endoscopy and general surgery.

Aspect includes a 21 inch wide screen for easy viewing in standard or HD format.

### HD

## Secure data

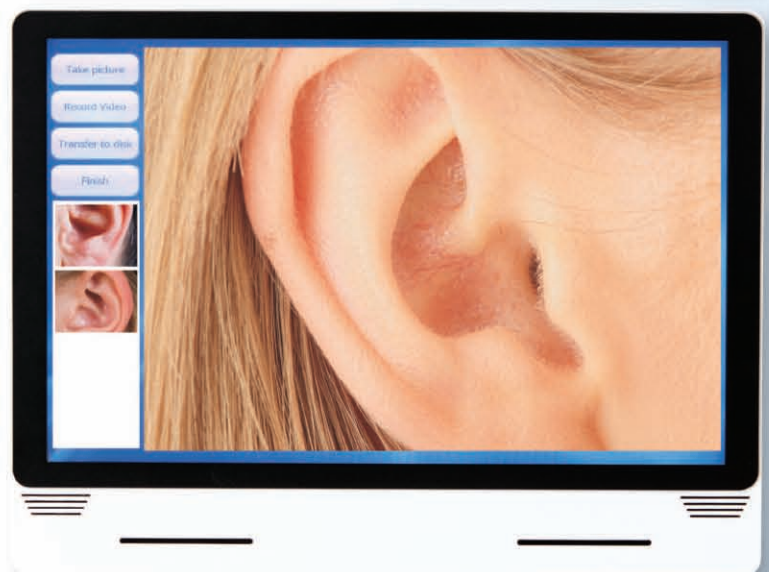
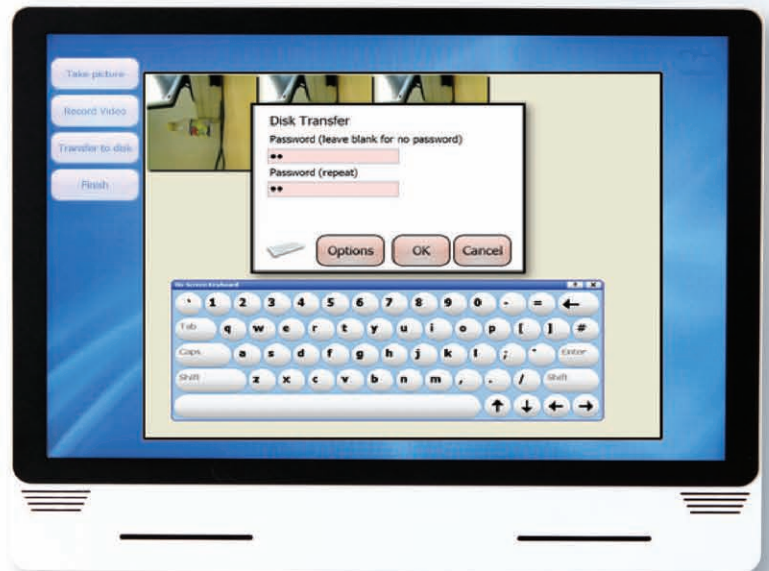
Aspect understands that patient confidentiality is a primary concern for clinicians.

Each system includes robust security features and encryption, integrated within the standard software package.

Key features:

- Password-protected login,
- Advanced 256-bit encryption.

Aspect also has encrypted back-up and copy-to-disc methods to prevent unauthorised personnel accessing highly confidential information.



*“Maintaining patient confidentiality is a primary concern*

high quality images in a clinical environment



## Easy to use

- Aspect is quick and easy to use with touch-screen technology.
- Intuitive user interfaces minimise training time.
- Fast navigation software format.

## Options to suit your needs

Aspect is available as a basic imaging system or a full patient management system, It can be customised to suit your requirements.

The options include:

- Full clinical dataset to manage patient data from first referral to discharge,
- Automated reports and audits,
- Standard letters to patients and General Practitioners,
- Interface with the hospital PAS/LAB system to avoid double entry of data,
- Capability to export images to USB.

Aspect is also available as a software only option.

## Customise your data

- Various standard clinical datasets.
- Aspect software can be customised to your exact needs.
- Fast low cost turnaround.

... for clinicians”





## Technical specification

Aspect is easy to install and maintain. It has been designed for trouble-free integration with standard IT infrastructures.

- 21 inch wide screen panel PC.
- VESA mount – connects to most trolleys and desk stands.
- Touch-screen functionality.
- Windows XP operating system.
- 160 GB hard drive.
- Connect to S-Video/BNC/RGB/HD cameras.
- DVD, CD recorder.
- Connect to hospital network.
- Encrypted back-up to DVD/CD/external folder.
- Stand-alone/network back-up and restore facility.

To find out more about Aspect, or to see how it works, please contact your local distributor.

**VISION<sup>+</sup>**  
medical

### **Vision Medical Limited**

Vision House, 69 Ewell Road,  
Long Ditton, Surrey KT6 5LH.

Telephone: +44 (0)208 398 3417

Fax: +44 (0)208 398 8333

Email: [info@visionmedical.co.uk](mailto:info@visionmedical.co.uk)

[www.visionmedical.co.uk](http://www.visionmedical.co.uk)



Manufactured by:

**VM Networks Limited**

81 Whitfield Street, London W1T 4HG. [info@vmnetworks.co.uk](mailto:info@vmnetworks.co.uk) [www.vmnetworks.co.uk](http://www.vmnetworks.co.uk)